

PER SISTEMI
OMOLOGATI CE-M (pag. 85 ; 108)
FOR CE-M APPROVED SYSTEMS

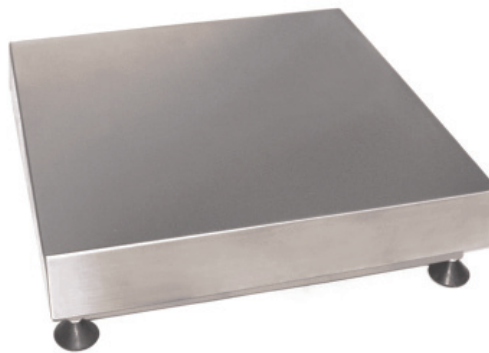
PIATTAFORME INOX AISI 304 MONOCELLA
AISI 304 STEEL SINGLE CELL PLATFORMS

AI

AI-6 kg	AI-15 kg	AI-30 kg	... dimens. 300 x 300 mm	Euro 280,00	
(1) AI-60 kg	(1) AI-120 kg	... dimens. 400 x 400 mm	Euro 390,00		
(2) AI-75 kg	(2) AI-150 kg	(2) AI-300 kg	... dimens. 600 x 600 mm	Euro 610,00	
AI-600 kg	... dimens. 800 x 800 mm	Euro 900,00			
Maggiorazione per portate fuori standard / Additional frice for non-standard platforms				+ Euro 100,00	
Approvazione ATEX II 1 G II 2 D (zone 0-1-2-21-22) / ATEX approved (zone 0-1-2-21-22)				Euro 10,00	
OPZIONI A RICHIESTA / OPTIONS ON REQUEST :					
(1) - IP68AM : Kit in acciaio inox + gomma per protezione IP68 della cella di carico / Kit (stainless steel + rubber) for IP68 protection of the load cell				KIT montato Kit mounted Euro 130,00	KIT NON montato Kit NOT mounted Euro 80,00
(2) - IP68APL: Kit in acciaio inox + gomma per protezione IP68 della cella di carico / Kit (stainless steel + rubber) for IP68 protection of the load cell				Euro 150,00	Euro 100,00

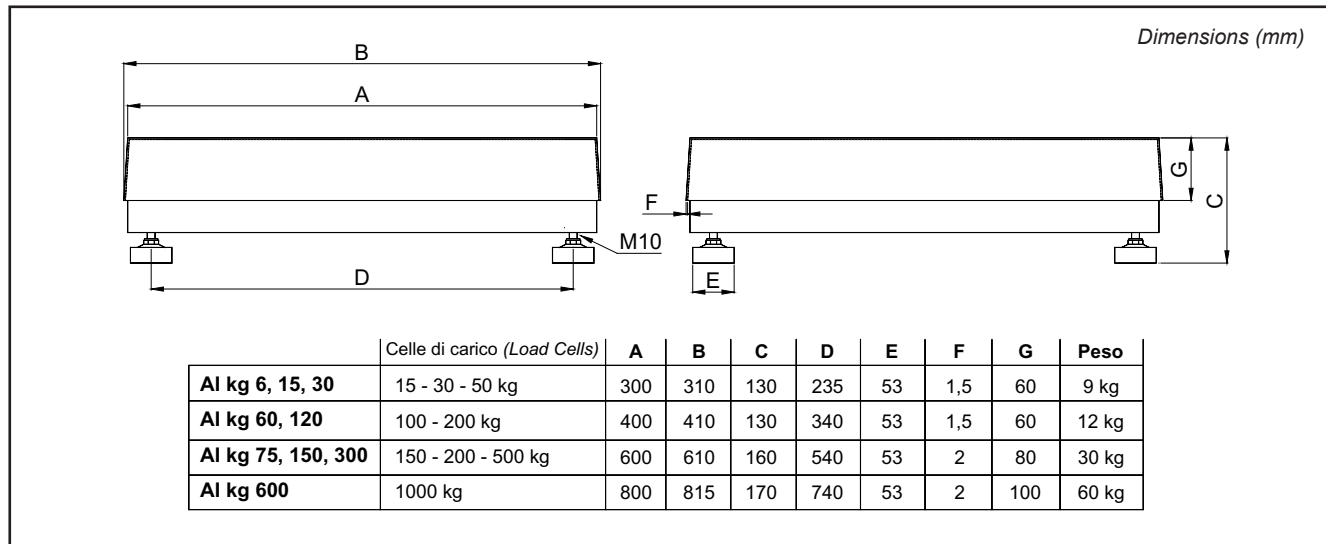
APPROVAZIONE R60 C3

OPZIONI KIT IP68AM/APL (OPTIONS)



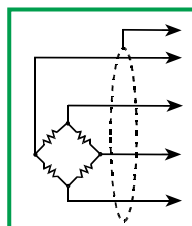
- STRUTTURA IN TUBOLARI IN ACCIAIO INOX AISI 304
- PIANO DI CARICO INOX AISI 304 APPOGGIATO
- CELLA DI CARICO IN LEGA D'ALLUMINIO IP65
- PIEDINI IN ACCIAIO INOX E POLIAMMIDE

- AISI 304 STEEL TUBULAR STRUCTURE
- AISI 304 STEEL LOADING TOP (laid)
- OFF-CENTER IP65 ALUMINIUM LOAD CELL
- STAINLESS STEEL & POLYAMID FEET



PORTATA MAX MAX CAPACITY	DIVISIONE CE-M CE-M DIVISION
AI-6 kg	kg 0.002
AI-15 kg	kg 0.005
AI-30 kg	kg 0.01
AI-60 kg	kg 0.02
AI-120 kg	kg 0.05
AI-75 kg	kg 0.05
AI-150 kg	kg 0.05
AI-300 kg	kg 0.1
AI-600 kg	kg 0.2

	AI 6 - 120 kg	AI 75 - 300 kg	AI 600 kg
SCHERMO (SHIELD)			
+ SEGNALE (+SIGNAL)	VERDE (GREEN)	VERDE (GREEN)	BLU (BLUE)
+ ALIMENT. (+EXCIT.)	ROSSO (RED)	ROSSO (RED)	ROSSO (RED)
* + SENSE (+SENSE)	BLU (BLUE)	BLU (BLUE)	MARRONE (BROWN)
- SEGNALE (-SIGNAL)	BIANCO (WHITE)	BIANCO (WHITE)	BIANCO (WHITE)
- ALIMENT. (-EXCIT.)	NERO (BLACK)	NERO (BLACK)	GIALLO (YELLOW)
* - SENSE (-SENSE)	MARRONE (BROWN)	GIALLO (YELLOW)	NERO (BLACK)



* Dove previsto (where provided)