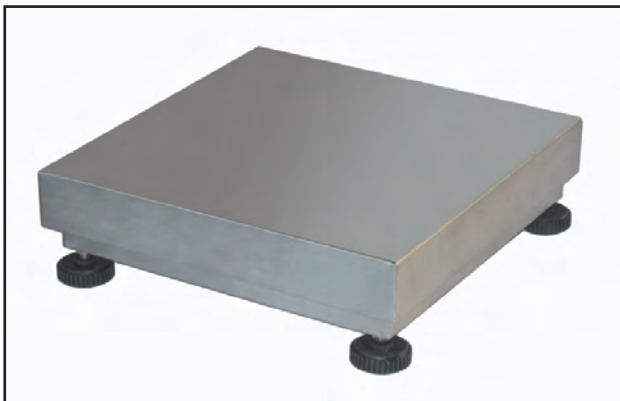


AIL-15 kg AIL-30 kg AIL-60 kg AIL-150 kg . . . dimens. 400 x 400 mm	Euro 615,00
AIL-75 kg AIL-200 kg AIL-300 kg dimens. 600 x 600 mm	Euro 1000,00
Approvazione ATEX  II 1 G  II 2 D (zone 0-1-2-21-22) / <i>Approbation ATEX (zone 0-1-2-21-22)</i>	Euro 10,00
Colonna portaindicatore (Ø 38mm, h 700mm) in acciaio inox con staffa inox per fissaggio a piattaforma / <i>Colonne porte-indicateur</i> (Ø 38 mm, h 700 mm) en acier inox pour fixation sur plateforme	Euro 80,00

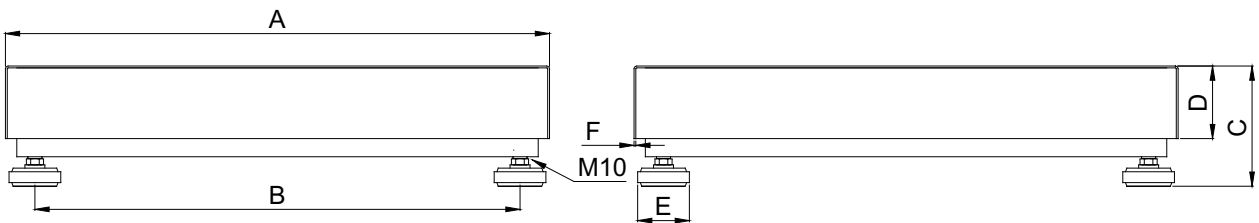
APPROBATION  **R60 C3**



- STRUTTURA IN TUBOLARI IN ACCIAIO INOX AISI 304
- PIANO DI CARICO INOX AISI 304 APPOGGIATO
- CELLA DI CARICO IN ACCIAIO INOX SALDATA IP68
- PIEDINI IN ACCIAIO INOX E POLIAMMIDE

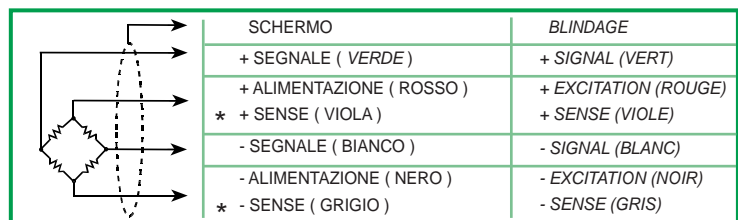
- STRUCTURE EN TUBULAIRES EN ACIER INOX AISI 304
- PLAN DE CHARGE EN ACIER INOX AISI 304 APPUYÉ
- CAPTEUR DE PESAGE EN ACERO INOX SOUDÉ IP68
- PIEDS EN ACIER GALVANISÉ ET EN POLYAMIDE

Dimensions (mm)



	Celle di carico (Load Cells)	A	B	C	D	E	F	Peso
AIL kg 15, 30, 60, 150	30 - 50 - 100 - 200 kg	400	340	120	60	57	1,5	9 kg
AIL kg 75, 200, 300	100 - 300 - 500 kg	600	535	135	80	57	2	25 kg

PORTATA MAX PORTÉE MAXI	DIVISIONE CE-M DIVISION CE-M
AIL kg 15	kg 0.005
AIL kg 30	kg 0.01
AIL kg 60	kg 0.02
AIL kg 75	kg 0.05
AIL kg 150	kg 0.05
AIL kg 200	kg 0.1
AIL kg 300	kg 0.1



* Dove previsto (où prévus)