

# BARRE PESATRICI IN ACCIAIO GALVANIZZATO

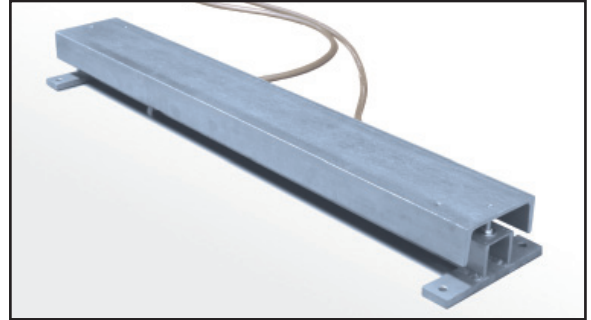
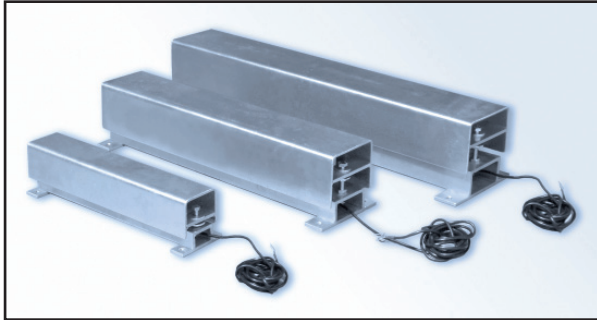
## GALVANIZED WEIGHING BARS

# BARRE

<b>BARRA 400</b>	kg 15, 30, 60 (monocella / single load cell) .....
<b>BARRA 800</b>	kg 300, 600 (monocella / single load cell) .....
<b>BARRA 1200</b>	kg 600, 1500, 2500 (due celle / two load cells) .....

Euro	<b>250,00</b>
Euro	<b>400,00</b>
Euro	<b>600,00</b>

A richiesta versione approvata **ATEX**  e **OIML**  R60 C3  
On request version approved



**BARRE PESATRICI 400 / 800** in acciaio galvanizzato, con cella di carico in lega d'alluminio IP65 off-center. Provviste di sistema di antiribaltamento.

**BARRE PESATRICI 1200** in acciaio galvanizzato; con due celle di carico in acciaio speciale IP68 a taglio, cavi 5 metri inguainati PVC. Provviste di sistema di antiribaltamento.

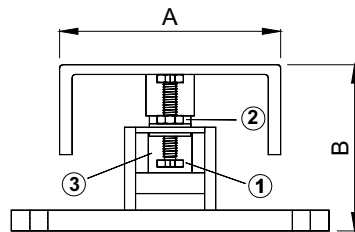
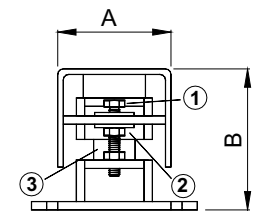
**400/800 WEIGHING BARS** constructed of galvanized steel, with off-center IP65 load cell. Anti-tilt system.

**1200 WEIGHING BARS** constructed of galvanized steel; two shear beam IP67 load cells with cables in PVC flexible conduit 5 meters long. Anti-tilt system.

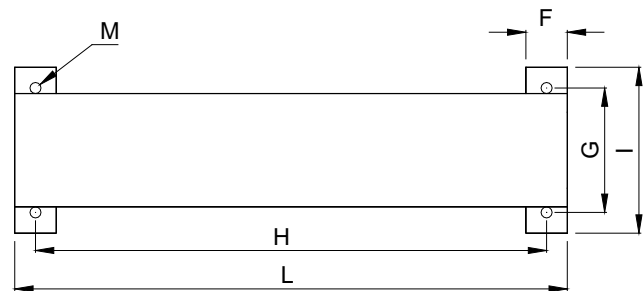
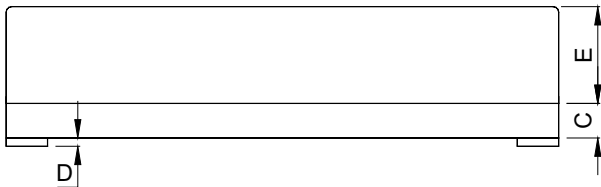
Dimensions (mm)

BARRE 400 - 800

BARRA1200



- ① Dado antiribaltamento  
Anti-tilt nut
- ② Dado per trasporto (liberare prima della messa in funzione)  
Transportation nut (release the nut before putting into operation)
- ③ Cella di carico  
Load cell



(Load Cells)

	CELLA DI CARICO	A	B	C	D	E	F	G	H	I	L	M	Peso
BARRA400	AZ kg 30 - 50 - 100	82	102	31	6	70	30	90	370	120	400	8MA	6 kg
BARRA800	AR kg 500 - 1000	140	157	47	6	104	50	170	750	200	800	12MA	23 kg
BARRA1200	FTO kg 500 - 1000 - 2000	160	120	40	15	65	50	190	1150	230	1200	13	40 kg

Collegare il conduttore di rame della piattaforma alla rete di terra (Connect the platform to the earthing system)