

PIATTAFORME MONOCELLA CON PIANO DI CARICO INOX

SINGLE CELL PLATFORMS WITH STAINLESS STEEL LOADING TOP

M

M 75, 150 kg dimens. 460 x 600 mm


Euro 290,00

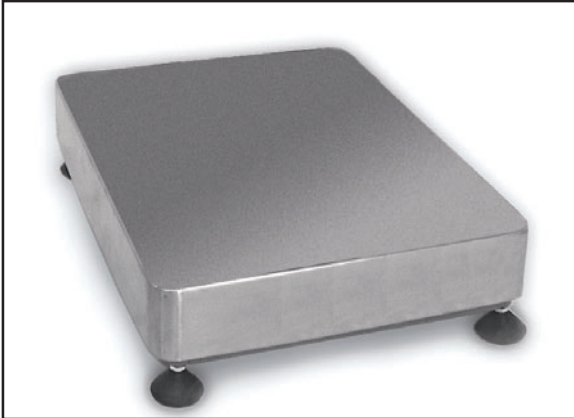
Colonna portaindicatori (Ø 38mm, h 700mm) in acciaio inox per fissaggio a piattaforma / *Indicator stainless steel stand* (Ø 38 mm, h 700 mm) for platform mounting

Euro 40,00

Approvazione **ATEX**  **II 1 G**  **II 2 D** (zone 0-1-2-21-22) / *ATEX approved (zone 0-1-2-21-22)*

Euro 10,00

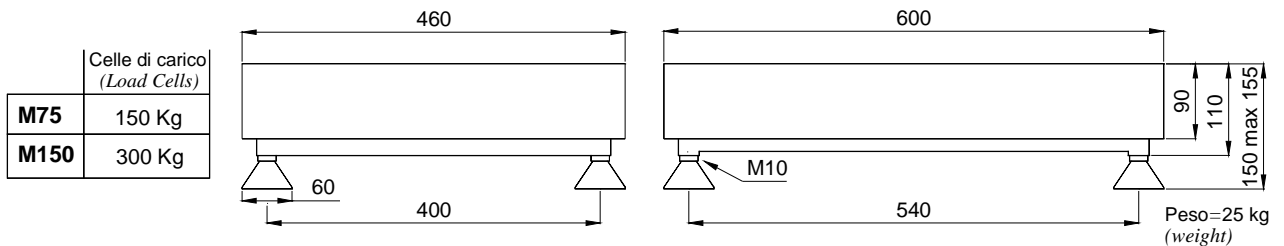
A richiesta versione approvata  **R60 C3**
On request version approved



- CELLA DI CARICO OFF-CENTER IN ALLUMINIO
- STRUTTURA IN TUBOLARI IN ACCIAIO VERNICIATO
- PIANO DI CARICO IN ACCIAIO INOX
- PIEDINI IN ACCIAIO ZINCATO E POLIAMMIDE
- ATTACCO PER COLONNA PORTAINDICATORE

- *OFF-CENTER ALUMINUM LOAD CELL*
- *STEEL PAINTED TUBULAR STRUCTURE*
- *STAINLESS STEEL LOADING TOP*
- *GALVANIZED STEEL & POLYAMID FEET*
- *CONNECTION FOR INDICATOR STAND*

Dimensions (mm)



* Dove previsto (where provided)