

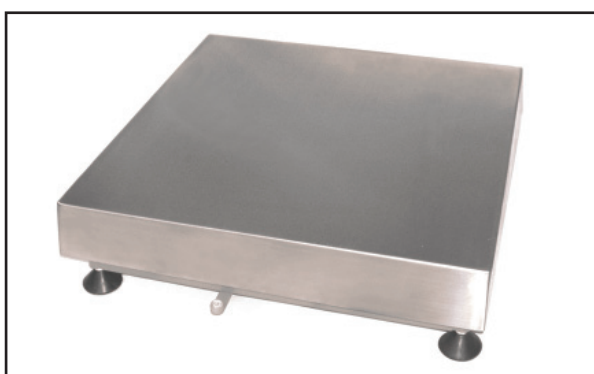


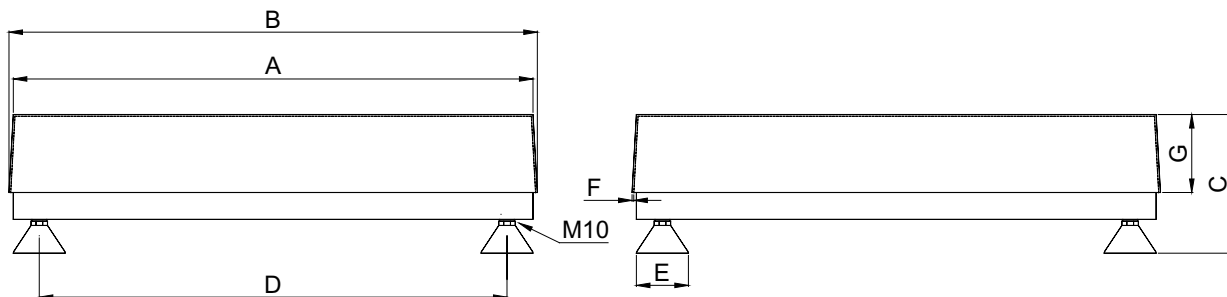
<b>AC-6 kg AC-15 kg AC-30 kg</b> .....	dimens. 300 x 300 mm .....	<b>Euro 200,00</b>
<b>AC-60 kg AC-120 kg</b> .....	dimens. 400 x 400 mm .....	<b>Euro 250,00</b>
<b>AC-150 kg AC-300 kg</b> .....	dimens. 600 x 600 mm .....	<b>Euro 430,00</b>
<b>AC-600 kg</b> .....	dimens. 800 x 800 mm .....	<b>Euro 700,00</b>
Maggiorazione per portate fuori standard / Additional price for non-standard platforms .....		<b>+ Euro 100,00</b>
Approvazione ATEX  II 1 G  II 2 D (zone 0-1-2-21-22) / ATEX approved (zone 0-1-2-21-22)		<b>Euro 10,00</b>

APPROVAZIONE  R60 C3



- STRUTTURA IN TUBOLARI IN ACCIAIO VERNICIATO
- PIANO DI CARICO IN ACCIAIO INOX AISI 304 APPOGGIATO
- CELLA DI CARICO IN LEGA D'ALLUMINIO IP65
- PIEDINI IN ACCIAIO ZINCATO E POLIAMMIDE
- STEEL TUBULAR STRUCTURE
- AISI 304 STAINLESS STEEL LOADING TOP (laid)
- OFF-CENTER ALUMINIUM IP65 LOAD CELL
- GALVANIZED STEEL & POLYAMID FEET

Dimensions (mm)

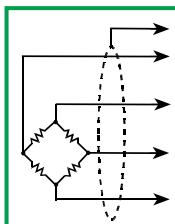


	Celle di carico (Load Cells)	A	B	C	D	E	F	G	Peso
<b>AC kg 6, 15, 30</b>	10 - 30 - 50 kg	300	310	138	240	60	1,5	60	8 kg
<b>AC kg 60, 120</b>	150 - 300 kg	400	410	150	340	60	1,5	70	10 kg
<b>AC kg 150, 300</b>	300 - 500 kg	600	610	160	540	60	2	90	25 kg
<b>AC kg 600</b>	1000 kg	800	815	185	740	60	2	100	60 kg

PORTATA MAX  
MAX CAPACITY

DIVISIONE CE-M  
CE-M DIVISION

AC-6 kg	kg 0.002
AC-15 kg	kg 0.005
AC-30 kg	kg 0.01
AC-60 kg	kg 0.02
AC-120 kg	kg 0.05
AC-150 kg	kg 0.05
AC-300 kg	kg 0.1
AC-600 kg	kg 0.2



	AC 15 - 120 kg	AC 150 - 300 kg	AC 600 kg
SCHERMO (SHIELD)			
+ SEGNALE (+SIGNAL)	VERDE (GREEN)	VERDE (GREEN)	BLU (BLUE)
+ ALIMENT. (+EXCIT.)	ROSSO (RED)	ROSSO (RED)	ROSSO (RED)
* + SENSE (+SENSE)	BLU (BLUE)	BLU (BLUE)	MARRONE (BROWN)
- SEGNALE (-SIGNAL)	BIANCO (WHITE)	BIANCO (WHITE)	BIANCO (WHITE)
- ALIMENT. (-EXCIT.)	NERO (BLACK)	NERO (BLACK)	GIALLO (YELLOW)
* - SENSE (-SENSE)	MARRONE (BROWN)	GIALLO (YELLOW)	NERO (BLACK)

\* Dove previsto (where provided)