



# CELLE DI CARICO PER PIATTAFORME 800 x 800 mm

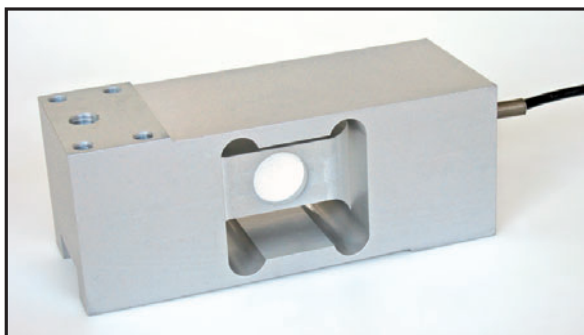
## OFF-CENTER LOAD CELLS FOR PLATFORMS 800 x 800 mm

**AR**

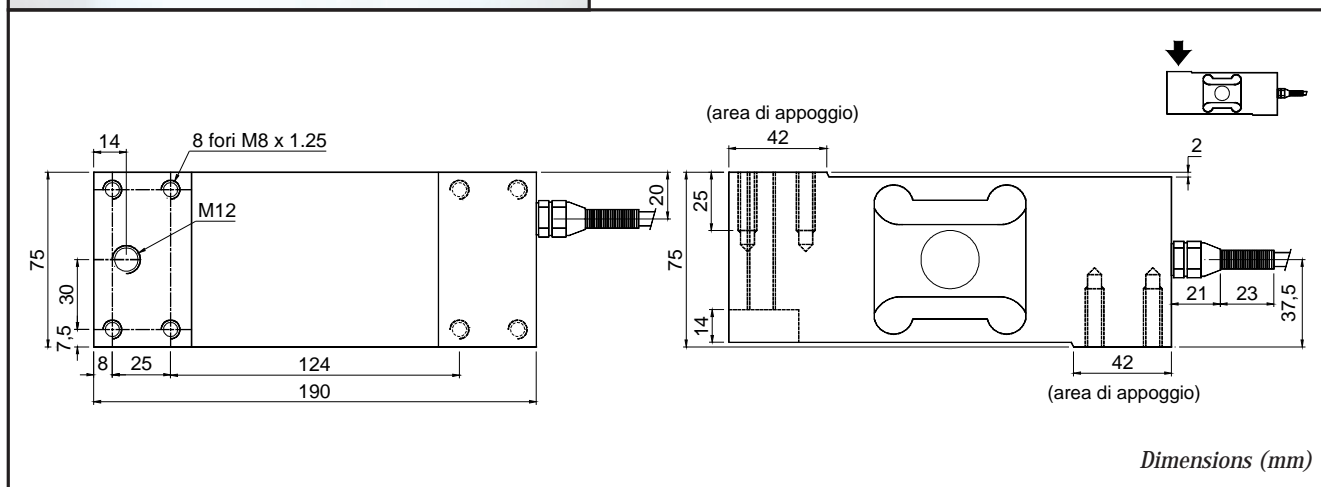
AR kg 500, 1000 .....  
 Approvazione ATEX  II 1 G  II 2 D (zone 0-1-2-21-22) / ATEX approved (zone 0-1-2-21-22)

Euro 230,00  
 Euro 10,00

Realizzate in accordo alle norme OIML R60.  
 Manufactured according to OIML R60 standards.



- ESECUZIONE LEGA DI ALLUMINIO
- ERRORE COMBINATO  $\leq \pm 0,02\%$
- GRADO DI PROTEZIONE IP 65
- ALLOY ALUMINUM LOAD CELL
- COMBINED ERROR  $\leq \pm 0.02\%$
- PROTECTION CLASS IP 65



### CARATTERISTICHE TECNICHE

### TECHNICAL FEATURES

SENSIBILITA'  
 EFFETTO DELLA TEMPERATURA SULLO ZERO  
 EFFETTO DELLA TEMPERATURA SUL FONDO SCALA  
 COMPENSAZIONE TERMICA  
 CAMPO DI TEMPERATURA DI LAVORO  
 CREEP A CARICO NOMINALE DOPO 30 MINUTI  
 TENSIONE DI ALIMENTAZIONE MAX TOLLERATA  
 RESISTENZA D'INGRESSO  
 RESISTENZA DI USCITA  
 BILANCIAMENTO DI ZERO  
 RESISTENZA D'ISOLAMENTO  
 CARICO STATICO MASSIMO  
 CARICO DI ROTTURA in % sul FONDO SCALA  
 DEFLESSIONE A CARICO NOMINALE

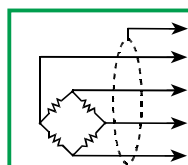
**2 mV/V** +/-10%  
 0.0025% °C  
 0.0025% °C  
 - 10°C / + 40°C  
 - 20°C / + 60°C  
 0.03 %  
 15 Volt  
 410 Ohm +/- 10  
 350 Ohm +/- 3  
 +/- 2 %  
 >2000 MOhm  
 120 %  
 > 200 %  
 0.5 mm

**SENSITIVITY**  
**TEMPERATURE EFFECT ON ZERO**  
**TEMPERATURE EFFECT ON SPAN**  
**COMPENSATED TEMPERATURE RANGE**  
**OPERATING TEMPERATURE RANGE**  
**CREEP AT NOMINAL LOAD IN 30 MINUTES**  
**MAX SUPPLY VOLTAGE WITHOUT DAMAGE**  
**INPUT RESISTANCE**  
**OUTPUT RESISTANCE**  
**ZERO BALANCE**  
**INSULATION RESISTANCE**  
**MECHANICAL LIMIT IN SERVICE**  
**DESTRUCTIVE LOAD**  
**DEFLECTION AT NOMINAL LOAD**

### CAVO

### CABLE

LUNGHEZZA	3 m	LENGHT
DIAMETRO	5 mm	DIAMETER
FILI CONDUTTORI	4 x 0.20 mm <sup>2</sup>	CORES



SCHERMO	SHIELD
+ SEGNALE ( VERDE )	+ SIGNAL (GREEN)
+ ALIMENTAZIONE ( ROSSO )	+ EXCITATION (RED)
- SEGNALE ( BIANCO )	- SIGNAL (WHITE)
- ALIMENTAZIONE ( NERO )	- EXCITATION (BLACK)