


* FTP kg 75, 150, 300	AFLESSIONE/BENDING BEAM.....	Euro 160,00
FTP kg 500, 750, 1000, 1200, 1500, 2000	A TAGLIO /SHEAR BEAM.....	Euro 160,00
FTP kg 3000, 5000	A TAGLIO /SHEAR BEAM.....	Euro 210,00
FTP kg 10000	A TAGLIO /SHEAR BEAM.....	Euro 250,00
Approvazione ATEX   (zone 0-1-2-21-22) /ATEX approved (zone 0-1-2-21-22)		Euro 10,00


A richiesta, per FTP da 500 a 2000 kg, versione approvata  R60 C3 Vmin = Emax / 15000
 On request, for FTP 500 to 2000 kg, version approved

kg 75 - 300



IP67*
resinata (resin sealed)

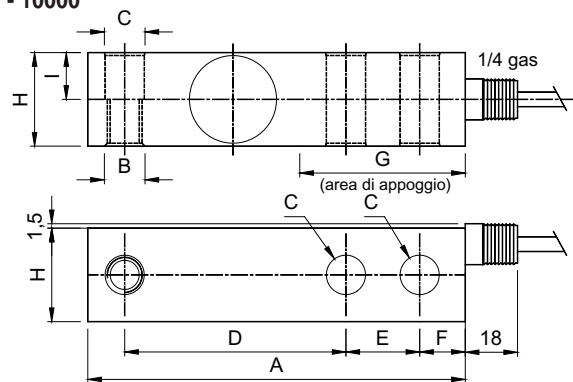
kg 500 - 10000



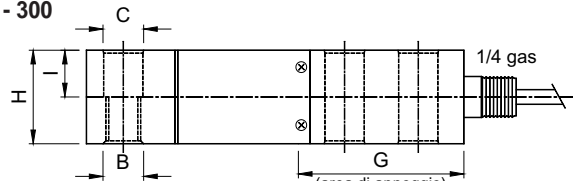
IP68
saldata (welded)

- ESECUZIONE IN ACCIAIO INOX
- ERRORE COMBINATO ≤ +/- 0,02 %
- GRADO DI PROTEZIONE IP 68 (IP67*)
- STAINLESS STEEL CONSTRUCTION
- COMBINED ERROR ≤ +/- 0.02 %
- PROTECTION RATING IP 68 (IP 67*)

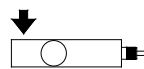
kg 500 - 10000



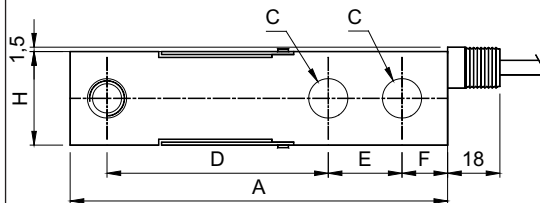
kg 75 - 300



Dimensions (mm)



	kg 75 - 2000	kg 3000 - 5000	kg 10000
A	130	171,5	222,3
∅ B	M12 x 1.75	M 20 X 2.5	M 24 x 2
∅ C	13.5	21	26.2
D	76.2	95.3	123.8
E	25.4	38.1	50.8
F	15.7	19.1	25.4
G	57	76	102
H	32	38	50.8
I	16	19	25.4



CARATTERISTICHE TECNICHE

SENSIBILITA'	2 mV/V +/-0.4%
EFFETTO DELLA TEMPERATURA SULLO ZERO	0.002 % / °C
EFFETTO DELLA TEMPERATURA SUL FONDO SCALA	0.0012 % / °C
COMPENSAZIONE TERMICA	- 10°C / + 40°C
CAMPO DI TEMPERATURA DI LAVORO	- 20°C / + 70°C
CREEP A CARICO NOMINALE DOPO 30 MINUTI	0.016 %
TENSIONE DI ALIMENTAZIONE MAX TOLLERATA	15 Volt
RESISTENZA D'INGRESSO	385 Ohm +/-10
RESISTENZA DI USCITA	350 Ohm +/- 3
BILANCIAMENTO DI ZERO	+/- 2 %
RESISTENZA D'ISOLAMENTO	> 5000 MOhm
CARICO STATICO MASSIMO	150 %
CARICO DI ROTTURA in % sul FONDO SCALA	> 200 %
DEFLESSIONE A CARICO NOMINALE	0.4 mm

TECHNICAL FEATURES

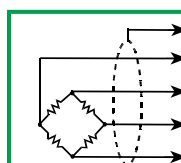
SENSITIVITY	2 mV/V +/-0.4%
TEMPERATURE EFFECT ON ZERO	0.002 % / °C
TEMPERATURE EFFECT ON SPAN	0.0012 % / °C
COMPENSATED TEMPERATURE RANGE	- 10°C / + 40°C
OPERATING TEMPERATURE RANGE	- 20°C / + 70°C
CREEP AT NOMINAL LOAD AFTER 30 MINUTS	0.016 %
MAX SUPPLY VOLTAGE WITHOUT DAMAGE	15 Volt
INPUT RESISTANCE	385 Ohm +/-10
OUTPUT RESISTANCE	350 Ohm +/- 3
ZERO BALANCE	+/- 2 %
INSULATION RESISTANCE	> 5000 MOhm
MAXIMUM STATIC LOAD	150 %
DESTRUCTIVE LOAD IN % ON FULL SCALE	> 200 %
DEFLECTION AT NOMINLA LOAD	0.4 mm

CAVO

LUNGHEZZA :	5 m
FTP kg 75-5000	10 m
FTP kg 10000	5 mm
DIAMETRO	4 x 0.25 mm ²
FILI CONDUTTORI	

CABLE

LENGHT :	FTP kg 75-5000
	FTP kg 10000
DIAMETER	
CORES	



SCHERMO (GIALLO)	SHIELD (YELLOW)
+ SEGNALE (VERDE)	+ SIGNAL (GREEN)
+ ALIMENTAZIONE (ROSSO)	+ EXCITATION (RED)
- SEGNALE (BIANCO)	- SIGNAL (WHITE)
- ALIMENTAZIONE (NERO)	- EXCITATION (BLACK)